

X-MASS GIFTS

Colorissimo®





BLUETOOTH



MICROPHONE

COMPACT SPEAKERS



COMPACT SPEAKERS 3W COLOUR SOUND (PS05)

Measurements: 7,5x6,2x6,2 cm
 Materials: metal, plastic, rubber
 Packaging: elegant carton box
 Printing: T

Speaker driver: 3,5 cm
 Frequency response: 90 Hz-20 kHz
 Playback time: 2,5-3 H
 Output: 3W
 Battery capacity: 300 mAh
 S/N ratio: ≥76 dB
 Built in mic: yes
 Aux cable: yes



COMPACT BLUETOOTH SPEAKERS SURRON 2x3W (PS20)

Measurements: 11,7x5,8x7 cm
 Materials: metal, plastic, rubber
 Packaging: protective pouch & elegant gift carton
 Printing: UV

Speaker driver: 3,5 cm
 Frequency response: 90 Hz-20 kHz
 Playback time: 3-3,5 H
 Output: 2x3W
 Battery capacity: 800 mAh
 S/N ratio: ≥76 dB
 Built in mic: yes
 AUX cable: yes





BLUETOOTH



MICROPHONE

GALACTIC HEADPHONES

DEEP
& CLEAR
SOUND



WIRELESS HEADPHONES COLORISSIMO WITH BUILT-IN MICROPHONE (PH20)

Up to: 10 hours of battery life

Bluetooth® V5.0

Frequency response: 20 Hz-20 kHz

Measurements: 17x20x7,5 cm

Materials: ABS, metal, plastic, rubber

Packing: elegant carton box

Printing: 3D sticker 4x5 cm, L





**1. POWER BANK RAY
4000 mAh (PB40)**

Input: DC 5V / 1A
Output: DC 5V 1A
USB cable: yes
Measurements: 12,5x6,4x 0,7 cm
Materials: ABS, metal
Packing: elegant carton box
Printing: T, UV



**2. POWER BANK TRIO
5200 mAh WITH
LED LAMP (PB56)**

Input: DC 5V / 1A,
Output: DC 5V 2,1A
Measurements: 9,3x4,8x2,3 cm
Materials: metal, plastic, rubber
Packing: elegant carton box
Printing: T, UV



**3. POWER BANK TRIO
2600 mAh (PB22)**

Input: DC 5V / 1A
Output: DC 5V 1A
Measurements: 9x3x2,1 cm
Materials: ABS, metal, plastic
Packing: elegant carton box
Printing: T, UV



**4. POWER BANK DUO
2600 mAh (PB28)**

Input: DC 5V / 1A
Output: DC 5V 1A
Measurements: 9x3x 2,1 cm
Materials: metal, plastic, rubber
Packing: elegant carton box
Printing: T, UV



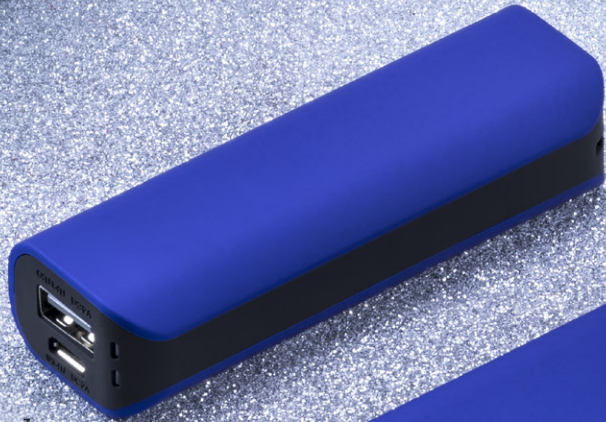
**5. POWER BANK DUO
5200 mAh WITH LED
LAMP (PB54)**

Input: DC 5V / 1A
Output: DC 5V 2,1A
Measurements: 9,3x4,8x2,3 cm
Materials: metal, plastic, rubber
Packing: elegant carton box
Printing: T, UV



FC CE  RoHS

SOLID POWER BANKS





DESK CHARGER POWER TOWER 5 USB (PT50)

Input: AC100-240 V/1000 mA
 Output: 5.0 V/5 A
 Measurements: 7,9x6,57x11,2 cm
 Materials: ABS, polycarbonate
 Packing: elegant carton box
 Printing: T

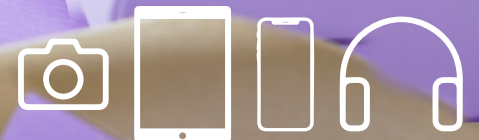


SET: DESK CHARGER POWER TOWER & POWER BANK TRIO 5200 mAh (PT50/PB56)

Materials: ABS, metal, plastic, polycarbonate, rubber
 Packing: elegant carton box
 Printing: T, UV



USB DESK CHARGERS



CHARGING ALL USB DEVICES



ORIGINAL CAR SETS

SET: POWER BANK RAY & CAR CHARGER RUBBY (PB40/PC40)

Materials: ABS, metal, polycarbonate
Packing: elegant carton box
Printing: T, UV



SET: THERMAL MUG COLORISSIMO & POWER BANK RAY (HD02/PB40)

Material: ABS, metal, plastic, rubber, stainless steel
Packing: elegant carton box with paper insertion
Printing: T, UV



ENERGISING SETS





**MUSIC
ALL
AROUND**

**DESK CHARGER POWER TOWER
& SPEAKER COLOUR SOUND
(PT50/PS05)**

Materials: ABS, metal, plastic,
polycarbonate, rubber
Packing: elegant carton box
Printing: T



MUSIC SETS



**SET: SPEAKER COLOUR SOUND
& POWER BANK RAY
(PS05/PB40)**

Materials: ABS, metal, plastic, rubber
Packaging: elegant carton box
Printing: T, UV





WATER BOTTLE & THERMOS SET (HB01/HT01)

Measurements: 24,5x31x9,8 cm
Materials: metal, plastic, rubber
Packing: elegant carton box with paper insertion
Printing: T, UV

THERMAL MUG & WATER BOTTLE SET (HB01/HD01)

Measurements: 29,3x25,5x8,2 cm
Materials: plastic, rubber, stainless steel
Packing: elegant carton box with paper insertion
Printing: T, UV



DRINKWARE SETS



WATER BOTTLE & THERMAL MUG SET (HB02/HD02)

Measurements: 29,3x25,5x8,2 cm
Materials: plastic, rubber, stainless steel
Packing: elegant carton box with paper insertion
Printing: T, UV

THERMAL MUG & THERMOS SET (HD01/HT01)

Measurements: 24,5x31x9,8 cm
Materials: plastic, rubber, stainless steel
Packing: elegant carton box with paper insertion
Printing: T, UV



1. THERMAL MUG (HD01)

Measurements: 17,4x8,5 cm
Capacity: 450 ml
Materials: plastic, rubber, stainless steel
Packing: elegant carton box
Printing: T, UV

2. THERMAL MUG (HD02)

Measurements: 21x7,5 cm
Capacity: 450 ml
Materials: plastic, rubber, stainless steel
Packing: elegant carton box
Printing: T, UV

3. THERMOS (HT01)

Measurements: height 25 cm, Ø 7,5 cm
Capacity: 500 ml
Materials: plastic, rubber, stainless steel
Packing: elegant carton box
Printing: T, UV

4. WATER BOTTLE (HB02)

Measurements: 25,5x7,5 cm
Capacity: 700 ml
Materials: plastic, rubber, stainless steel
Packing: elegant carton box
Printing: T, UV

5. WATER BOTTLE (HB01)

Measurements: 22,5x7 cm
Capacity: 600 ml
Materials: plastic, rubber, stainless steel
Packing: elegant carton box
Printing: T, UV





SOFT TOUCH DRINKWARE





**LARGE MULTITOOL
COLORADO WITH SAFE®
FUNCTION (MM02)**

Measurements: 0,5x4,5x2,3 cm
Materials: stainless steel, anodized metal, plastic
Packing: elegant carton box, polyester pouch
Printing: L

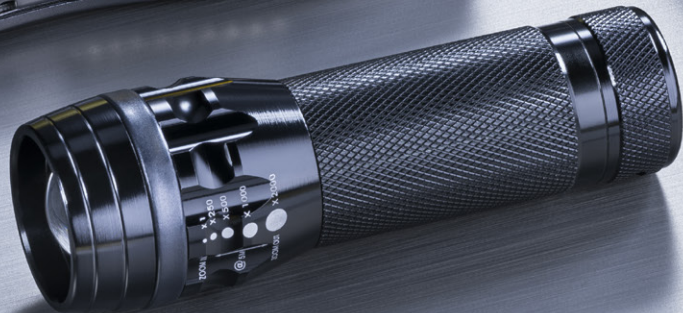


**SET II COLORADO: TORCH
& LARGE MULTITOOL
(MSET02)**

Materials: glass, lacquered metal, plastic
Packing: black elegant box & black gift carton
Printing: L



PRACTICAL METAL TOOLS





**POCKET KNIFE
COLORADO (MA01)**

Measurements: 9,1x3,2 cm
Materials: stainless steel,
anodized metal
Packing: elegant carton box
Printing: L



**LED TORCH COLORADO
(MT01)**

Measurements: 10,5x3 cm
Materials: glass, metal
Packing: elegant carton box
Printing: L



PRACTICAL METAL TOOLS



SET I COLORADO: LED TORCH & A POCKET KNIFE (MSET03)

Materials: glass, metal
Packing: black elegant box & black gift carton
Printing: L



LED TORCH:

- focused light beam
- zoom up to 5 meters
- generates an alarm light



PERFECT FOR OUTDOOR

SET: LED TORCH COLORADO & MULTITOOL RUBBY (MT01/MM04)

Materials: glass, metal, rubber
3xAAA batteries included
Packing: polyester pouch
& elegant carton box
Printing: L



SET: LED TORCH COLORADO & MULTIFUNCTIONAL TOOL DENVER (MT01/MH02)

Materials: 3Cr13 stainless steel,
glass, metal
3xAAA batteries included
Packing: protective pouch
& elegant carton box
Printing: L



SURVIVAL SETS





**CAR
ACCIDENT
TOOL**



**EMERGENCY CAR KNIFE EXTREME
3in1 (MK01)**

Measurements: 11,4x3,2x1,8 cm
Materials: 3Cr13 stainless steel, rubber, wolfram metal,
tungsten
Packing: elegant carton box
Printing: L

APPLICATION:

- For knocking out and breaking car windows in the event of latching the door as result of a collision or accident.
- When the car falls into the water during an accident. The function of breaking window will save your life.
- For cutting automotive safety belts when the belt mechanism is jammed.



✓ **BELT
CUTTER**



✓ **WINDOW
BREAKER**

CAR SAFETY SET





**SET: EMERGENCY KNIFE
EXTREME & LED TORCH
COLORADO (MK01/MT01)**

Materials: 3Cr13 stainless steel, glass,
metal, rubber, wolfram metal, tungsten
Packing: black elegant box
& black gift carton
Printing: L



CAR SETS



**SET: USB CAR CHARGER
RUBBY & EMERGENCY KNIFE
EXTREME (PC40/MK01)**

aterial: ABS, metal, polycarbonate,
rubber, tungsten
Packing: black elegant box
& black gift carton
Printing: L, T, UV



OUTDOOR SETS

**SET: SPEAKER SURRON,
THERMOS COLORISSIMO
& MULTITOOL RUBBY
(PS20/HT01/MM04)**

Materials: metal, plastic, rubber, stainless steel
Packing: protective pouch & gift carton,
elegant carton box
Printing: L, T, UV



OUTDOOR SETS

**SET: POWER BANK 5200 mAh,
MULTITOOL COLORADO
(PB56/MM02/HD02)**

Materials: ABS, anodized metal, metal, plastic, rubber

Packing: protective pouch & gift carton,
elegant carton box

Printing: L, T, UV





✓ ANTI-RAIN PROTECTION



✓ AIR FLOW SYSTEM



✓ HEADPHONES OUTPUT

1. OUTDOOR BACKPACK FLASH M (LPN525)
2. OUTDOOR BACKPACK FLASH L (LPN501)

Measurements LPN525: 45x16x31 cm
Measurements LPN501: 48x14x31 cm
Materials: jacquard 420D, nylon Ripstop, polyester 600D
Packing: foil & elegant gift bag
Printing: S

■ ■ ■ ■ ■ ■ ■ ■ ■ ■ (LPN525)
■ ■ ■ ■ ■ ■ ■ ■ ■ ■ (LPN501)



✓ REFLECTORS





OUTDOOR BACKPACKS



2



WOMEN'S SOFTSHELL JACKETS (DJ2)

Measurements: S,M,L,XL,XXL
Materials: 94% polyester, 6% elastane, 100% polyester fleece
Packing: foil
Printing: Screen printing



MEN'S SOFTSHELL JACKETS (DJ1)

Measurements: S,M,L,XL,XXL,XXXL,
Materials: 94% polyester, 6% elastane, 100% polyester fleece
Packing: foil
Printing: Screen printing





SOFTSHELL JACKETS



✓ BREATHABILITY
10 000 g/m²

✓ WINDPROOF
10 000



FULL-AUTOMATIC UMBRELLA CAMBRIDGE (US20)

Measurements: Φ 99 cm

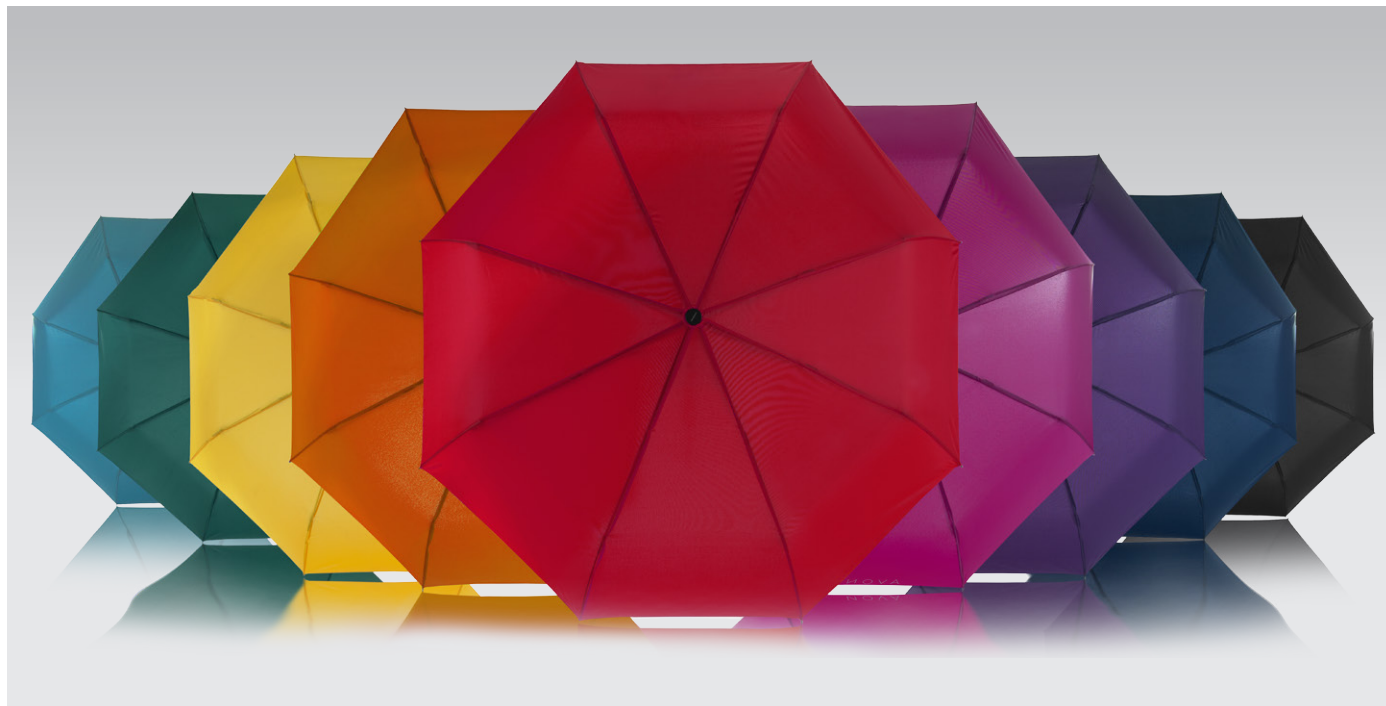
Materials: poliester pongee

Packing: protective pouch, foil & elegant gift bag

Printing: S



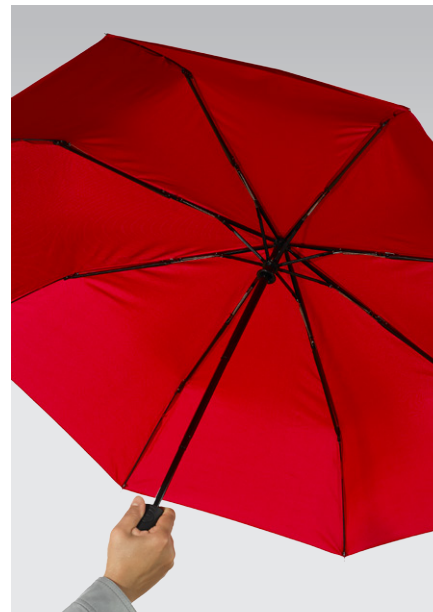
A very robust umbrella from the Cambridge collection with DAS (Double Automatic System) and an anti-wind system. The frame is made from metal and the handle is covered with ABS plastic for a safe grip and a nice feeling. It is ideal for women's handbags. The carrying case is included.



DAS
double
automatic
system



Step 1: press the button to open



Step 2: umbrella is open



Step 3: press the button to close

SOLID UMBRELLAS



DAS
double
automatic
system



CAR SETS

must have

**CAR SET: USB CAR CHARGER
RUBBY, EMERGENCY KNIFE
EXTREME & THERMAL MUG
COLORISSIMO
(PC40/MK01/HD02)**

Materials: 3Cr13 stainless steel, ABS,
metal, plastic, polycarbonate, rubber,
tungsten, wolfram
Packing: elegant carton box
Printing: L, T, UV



CAR SETS

must have



CAR SET: THERMOS COLORISSIMO & FULL-AUTOMATIC UMBRELLA CAMBRIDGE (HT01/US20)

Materials: plastic, poliester pongee, rubber, stainless steel, metal
Packing: protective pouch and foil, elegant carton box
Printing: S, T, UV





**LAPTOP BAG MISTRAL
(LNN211)**

Measurements: 41x30x8,5 cm
 Materials: poliester poly filamem 210X210D,
 Packing: foil & elegant gift bag
 Printing: S

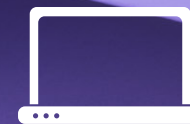


**LAPTOP BAG MISTRAL
& FULL-AUTOMATIC UMBRELLA
CAMBRIDGE (LNN211/US20)**

Materials: poliester poly filamem
 210X210D, poliester pongee
 Packing: protective pouch,
 foil & elegant gift bag
 Printing: S



LAPTOP BAGS SETS



LAPTOP POCKET 15"



ULTRALIGHT



COSMETIC BAG LILLY (STN90)

Measurements: 17,5x11x5 cm

Materials: Saffiano leather, metal, 18K gold, YKK zippers

Packing: elegant carton box

Printing: L



Elegant Colorissimo Lilly leather cosmetic bag. Made of natural Saffiano leather, which is resistant to dirt and scratches, with a high-quality snag-free YKK zipper covered with 18ct gold. The product has a certificate of originality. Packed in a gift box. The Colorissimo brand offers modern design and guarantees the highest-quality promotional products.





SAFFIANO LEATHER



YKK Zippers

LEATHER ACCESSORIES

women's



YKK Zipper
18 Carat
Gold



**1. SMALL WALLET & CARDHOLDER
LILLY (SPN40)**

**2. SMALL WALLET
& CARDHOLDER MARTINE (SPN41)**

Measurements: 13,8x10,2x3,4 cm
Materials: 18K gold metal plate, Saffiano leather/
Pebble Grain leather
Packing: elegant white gift box
Printing: L



LEATHER ACCESSORIES

fashion



1

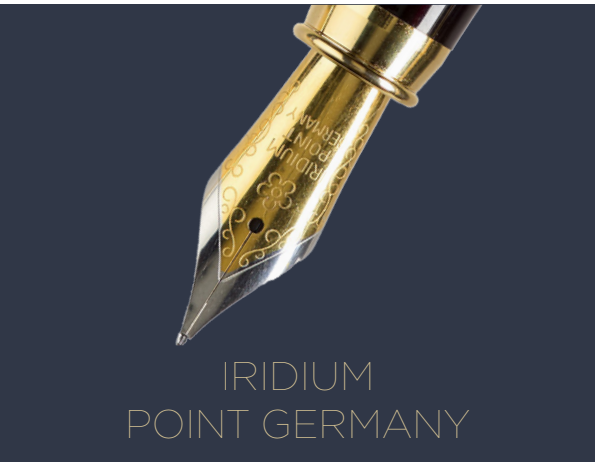
2



18 Carat
Gold



24 Carat
Gold



IRIDIUM
POINT GERMANY

Extravagant, high-quality writing accessories from Verazza and Cordoba Gold collections. The glossy black surface of the pens contrast perfectly with the gold finishes made of original 24K gold.

CORDOBA GOLD COLLECTION:
BALLPOINT PEN (PDN22)
AUTOMATIC PENCIL (PN22)
BALLPOINT PEN & AUTOMATIC PENCIL (PDN22/PN22)
Materials: 24K gold, metal
Packing: black elegant box & white gift carton
Printing: L



WRITING ACCESSORIES

exclusive



24 Carat
Gold



**VERAZZA GOLD COLLECTION:
BALLPOINT PEN (PDN19)**



**ROLLERBALL PEN (PKN19BLG)
FOUNTAIN PEN (PPN19BLG)**

**SET: BALLPOINT & ROLLERBALL PEN
(PDN19BLG/PKN19BLG)**

Materials: 24K gold, metal
Packing: black box and white decorative overlay
Printing: L





COWHIDE LEATHER

SILVER BALLPOINT PEN CORDOBA (PDN22)

Materials: metal
Packing: black box and white gift carton
Printing: L



LEATHER WALLET CONRAD (SPN60)

Materials: cowhide leather, metal, polyester
Packing: elegant carton box
Printing: L



SET: LEATHER WALLET CONRAD & SILVER BALLPOINT PEN CORDOBA

Materials: cowhide leather, metal, polyester
Packing: elegant carton box
Printing: L



MEN'S ACCESSORIES

exclusive





**BUSINESS BACKPACK
VOYAGER I (LPN650)**

Measurements: 46x34x19 cm
Materials: dobby polyester, polyester 1680D
Packing: foil & elegant gift bag
Printing: S



**LAPTOP & DOCUMENT
BACKPACK VOYAGER II (LPN600)**

Measurements: 42x33x20 cm
Materials: jacquard, nylon, polyester,
polyester 1680D
Packing: foil & elegant gift bag
Printing: S



BUSINESS BACKPACKS





SILVER PAD PRINTS

CHRISTMAS





GOLD PAD PRINTS

CHRISTMAS





UV PRINTS

CHRISTMAS



ELEGANT BOXES
CHRISTMAS



ELEGANT BAGS

CHRISTMAS





Colorissimo®