



# BLACK & GRAY BUSINESS GIFTS

***Colorissimo***<sup>®</sup>

## DRINKWARE COLLECTION

By drinking water from a BPA-free water bottle you are eliminating a main source contributing to higher BPA levels in your body. For improved health and to decrease the risks of the health effects above, we recommend choosing BPA-free drinking bottles from Colorissimo.

- Made of stainless steel
- Soft touch rubber-feel finishing
- Double walled insulation
- Certified for contact with food
- BPA FREE
- Elegant packaging







# drinkware collection

1. Water bottle, 600 ml./ HB01
2. Water bottle, 700 ml./ HB02
3. Thermos, 500 ml./ HT01
4. Thermal mug, 450 ml./ HD02
5. Thermal mug, 450 ml./ HD01

■ grey ■ black



1

2



3



4



5



## drinkware sets



**BEST PRICE!**

**Drinkware set:**  
Water Bottle, 700 ml. & Thermal Mug, 450 ml.  
HB02/HD02

 grey  black



**Drinkware set:**  
Water Bottle, 600 ml.  
& Thermal Mug, 450 ml.  
**HB01/HD01**

■ grey ■ black



**Drinkware set:**  
Thermal Mug, 450 ml.  
& Thermos, 500 ml.  
**HD02/HT01**

■ grey ■ black



**Drinkware set:**  
Thermos, 500 ml.  
& Water Bottle, 600 ml.  
**HT01/HB01**

■ grey ■ black



**Drinkware set:**  
Water Bottle, 600 ml.  
& Thermal Mug, 450 ml.  
**HB01/HD02**

■ grey ■ black



PERFECT  
FOR  
UV PRINT

# slim power bank

RoHS

CE



## RAY POWER BANK 4000 mAh (PB40)

Power bank Ray with a capacity 4000 mAh is a product with high quality Li-Polymer battery grade A (CE, Rohs, FC), ensures safe charging of all USB devices. It has charge indicator which allows to control energy consumption. Power bank with ergonomic shape, covered with a nice touch rubber. The product is packed in an elegant box.

■ grey ■ black



# wall clock



ANODIZED  
ALUMINIUM



SILENT MODE



1x AA BATTERY  
INCLUDED

## WALL CLOCK SAINT-TROPEZ (WS04)

A Wall clock with a black anodized aluminum frame and a glass cover shield. The tips are black and white, clearly visible and the logo will be extremely clear. The clock is equipped with a silent quartz movement mechanism, which provides durability and precise time.

■ grey ■ black





# metal tools



1. Large multitool Colorado (MM02)
2. Emergency car knife Extreme 3in1 (MK01)
3. Large multitool Rubby (MM04)
4. Led torch Rubby (MT02)
5. Led torch Colorado (MT01)
6. Pocket knife Colorado (MA01)

■ grey ■ black

# metal tools



## SET: LED TORCH & A POCKET KNIFE (MSET03)

Set Colorado I includes a LED flashlight and a pocket knife. Packed in elegant box.

■ grey ■ black



## SET: TORCH & LARGE MULTITOOL COLORADO (MSET02)

Durable Colorado kit includes a LED flashlight and av large multitool, perfect for outdoor activities. Packed in elegant box.

■ grey ■ black

## metal sets



### SET: MULTITOOL RUBBY & LED TORCH RUBBY (MM04/MT02)

Robust Rubby set for many occasions. Metal large multitool and led torch covered with rubber. Multitool has a professional Safe function which prevents from unexpected blade closure and injury. The tool has the following tips: wood ball, knife, flat screwdriver (3mm and 5mm) and crosshead with nail scraper, double bottle opener, can opener. Strobe flashlight generates focus, zoom up to 5m and alarm light. Set packed in an elegant black gift box.

### LED TORCH

- zoom up to 5 meters
- focused light beam
- alarm light (strobe)





# metal sets



## EMERGENCY KNIFE EXTREME & MULTITOOL RUBBY (MK01/MM04)

The emergency knife has three applications:  
a double-blade belt cutter, a high-tenacity tungsten window breaker, a stainless steel blade. Heavy duty, multifunction tool made of stainless steel and covered with rubber, with professional spring system and Safe function which prevents accidental closing of blades. Set is packed in elegant black box.

grey black



# solid tools

PERFECT  
FOR  
UV PRINT

**SET: LED TORCH COLORADO &  
MULTIFUNCTIONAL TOOL DENVER  
(MT01//MH02)**

An 8-function tool made of stainless steel. It has, among other things, a hammer, which is rarely found in multifunctional tools, and a nail puller. Led Flashlight Colorado made from high quality aluminum. Generates a focused light beam and zoom up to 5 meters. Generates an alarm light (strobe). 3 x AAA batteries included. Set is packed in elegant white box.



PERFECT  
FOR OUTDOOR





solid tools

PERFECT  
FOR  
UV PRINT



  
PERFECT  
FOR OUTDOOR

**FOLDING KNIFE COLORADO (MM01-BL)**

Folding knife Colorado made of stainless steel. Smooth, polished edge. Oxidation protection against corrosion. The knife includes a toolbox, can and bottle opener and a set of screwdrivers. Packed in a pouch made of polyester. Set is packed in elegant white box.



practical sets



**THERMAL MUG 450 ML  
& RAY POWER BANK 4000 mAh (HD02/PB40)**

Dimensions: 24,5x31x9,8 cm

Materials: ABS, plastic, stainless steel

Packing: elegant carton box

■ grey ■ black

practical sets



**THERMAL MUG 450 ml. & LARGE MULTITOOL RUBBY  
(HD02/MM04)**

Dimensions: 24,5x31x9,8 cm

Materials: ABS, plastic, stainless steel, anodised metal

Packing: elegant carton box

■ grey ■ black



# outdoor backpack



## SPORT BACKPACK FLASH S (LPN550)

Sport backpack Flash S has a headphone output, breathable back, reflective elements, side mesh pockets and 1 main pocket with an internal organiser, as well as 1 small zipped pocket on the front of the backpack.

Measurements: 260x130x380 mm

Materials: nylon, jacquard 420D, nylon

Ripstop, polyester 600D

Packing: foil



#### OUTDOOR BACKPACK FLASH M (LPN525)

Measurements: 450x160x310 mm

Materials: nylon, jacquard 420D, nylon

Ripstop, polyester 600D

Packing: foil



grey



black



#### OUTDOOR BACKPACK FLASH L (LPN501)

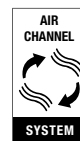
Measurements: 480x140x310 mm

Materials: nylon, jacquard 420D, nylon

Ripstop, polyester 600D

Packing: foil

Very functional traveller's backpacks made of high-areinforced and padded back with air channel system, reflective elements, rain polyester cover.







sport bag



**SPORT'S BAG FLASH (LSN501)**

Original sports bag made of modern materials resistant to mechanical damage, and at the same time extremely light. It has one roomy main compartment and reinforced grips for carrying in hand and an adjustable shoulder grip.

Dimensions: 560x290x290 mm

Materials: nylon Jacquard 420D PU, nylon ripstop PU, polyester 600D

grey black

# travel accessories



DURABLE MATERIAL



## TOILETRY BAG FLASH (FT560)

Toiletry bag Flash which has a large chamber with compartments for toiletries and a handheld metal hook. Lightweight and compact – perfect for business trips, summer vacations and for the gym.

Measurements: 310x210x110 mm

Material: nylon Jacquard 420D PU, nylon ripstop PU, polyester 600D

Packaging: foil

grey black



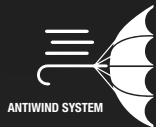
## HIP BAG FLASH (LNN501)

Hip Bag from the Flash collection made of tear-resistant, very durable material. It has a capacious pocket closed with a zipper. Equipped with an adjustable strap, headphone output and air flow system on the back. Dimensions: 300x130x100 mm

Materials: nylon Jacquard 420D PU, nylon ripstop PU, polyester 600D

Packaging: foil

grey black



# professional umbrella



## Automatic closing and opening



DAS system:  
1. press the button to open



DAS system:  
2. press the button to close



ANTI WIND system

### FULL AUTOMATIC UMBRELLA CAMBRIDGE (US20)

A very robust umbrella from the Cambridge collection with DAS (Double Automatic System) and an antiwind system. The frame is made from metal and the handle is covered with ABS plastic for a safe grip and a nice feeling. It is ideal for women's handbags. The carrying case is included. Packed in a protective cover.

Measurements: 990 mm

Materials: polyester pongee

Packing: protective pouch

■ grey ■ black

**BEST PRICE!**

**practical sets**



**CAR SET: THERMAL MUG 450 ml & FULL AUTOMATIC  
UMBRELLA (HD02/US20)**

Dimensions: 31,4 x 16,3 x 8,8 cm

Materials: polyester pongee, ABS, plastic, stainless steel

Packing: elegant carton box

 grey  black



# bluetooth speakers



## **SURRÓN SPEAKER (PS20)**

Bluetooth speaker with great 2 x 3W power and a range of up to 10 metres. Features a built-in 800 mAh lithium battery. Wide frequency response from 90 Hz to 20 KHz. The speaker also has a built-in microphone, which makes it possible to make telephone calls.

Materials: plastic, ABS, metal

Packaging: satin pouch + gift box



# bluetooth headphones

## WIRELESS HEADPHONES COLORISSIMO (PH20)

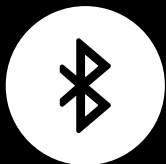
With up to 10 hours of battery life, Colorissimo Wireless Headphones is perfect for everyday. Enjoy ultra clear and deep sound with Bluetooth® V5.0 wireless listening freedom. The on-ear, cushioned ear cups are adjustable so you can customize your fit for all-day comfort.

Fast charging gives hours of playback.

Frequency response: 20Hz-20KHz

Materials: ABS, metal, plastic

Packing: elegant carton box



BLUETOOTH



18K GOLD  
zippers



Saffiano  
leather

# leather cosmetic bags



## COSMETIC BAG LILLY (STN90)

Elegant Colorissimo Lilly leather cosmetic bag.  
Made of natural Saffiano leather, which is resistant to dirt and scratches, with a high-quality snag-free YKK zipper covered with 18ct gold. The product has a certificate of originality. Packed in a gift box.

Measurements: 175x110x60 mm

Materials: Saffiano leather, metal, 18K Gold

YKK zippers

Packing: elegant carton box





# leather wallets



Cowhide  
leather

## CONRAD LEATHER WALLET (SPN60)

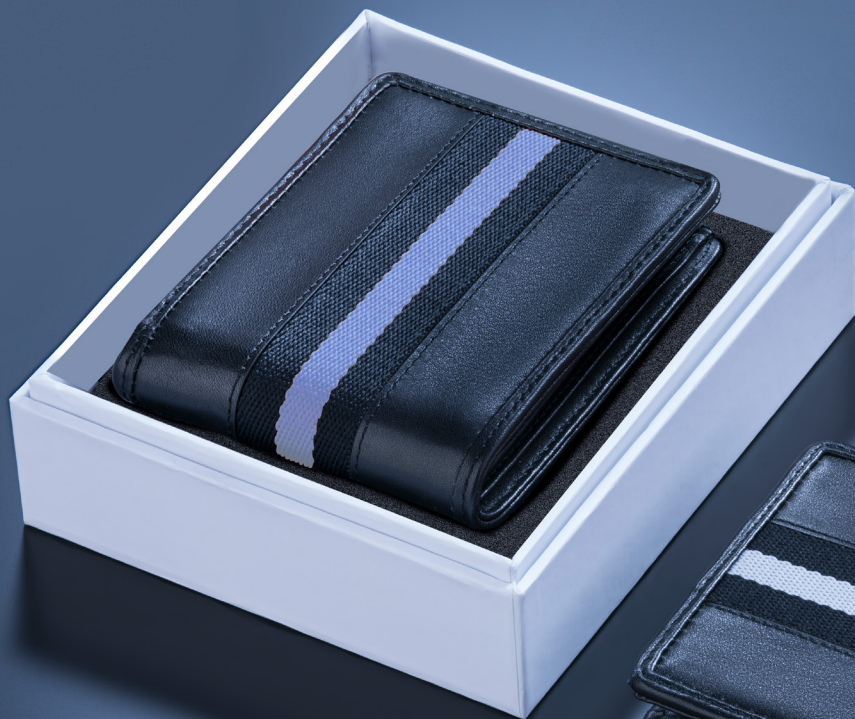
Functional double men's wallet CONRAD for demanding men.

Made of cowhide leather with colored material insert.

Inside two large banknote compartments, 6 credit cards  
and a vehicle registration certificate slots.

Materials: cowhide leather, metal, polyester

Packing: elegant carton box



# travel accessories



## **MISTRAL BEAUTY CASE (LKN201)**

Practical and elegant Mistral beauty case equipped with a slide-out handle. On the back, it has an additional handle that allows it to be attached to a suitcase frame. Inside, there is a small organizer for utensils. It is equipped with a detachable shoulder strap and high-quality YKK zippers.

Measurements: 300x170x220 mm

Materials: polyester poly filamem 210x210D

Packing: foil





# travel bags



## **MISTRAL BACKPACK AND BAG 2 IN 1 (LLN201)**

2 products in 1: backpack and carry-on bag Mistral. Light, spacious, with straps inside. It has retractable braces, a detachable, adjustable shoulder strap, fastening straps, a spacious main compartment, an outer pocket with a zipper. Made of durable material.

Measurements: 400x310x150 mm

Materials: polyester poly filamem 210x210D

Packing: foil

# 2 in 1

TRAVEL BAG  
& BACKPACK



# softshells



WINDPROOF

10000

BREATHABLE

10000

The Softshell jacket provides extra warmth and weather protection when keeping active in harsh conditions outdoors. These lightweight jackets have reliable YKK zippers, and are made of breathable and resistant to wind materials.

grey black

## WOMEN'S SOFTSHELL JACKETS (DJ2)

### MEN'S SOFTSHELL JACKETS (DJ1)

Measurements (DJ2): S, M, L, XL, XXL

Measurements (DJ1): S, M, L, XL, XXL, XXXL

Materials: 94% polyester, 6% elastane,  
100% polyester fleece

Packing: foil

# anti-theft backpack

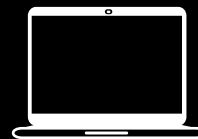
## ANTI-THEFT BACKPACK XENON 17" (LPN700)

A large single-compartment backpack with numerous pockets and two compartments that help to keep order and protect things from damage. A hidden main zipper (access to the inside of the backpack on the back) increases protection against theft. The backpack has colorful inserts, metal zippers, a padded upper handle and a strap on the back that allows you to attach the backpack to a suitcase while traveling.

Materials: 1680D nylon, metal elements

Dimensions: 30.5x17.5x46 cm

Capacity: 24 l



LAPTOP 17"





# laptop backpacks



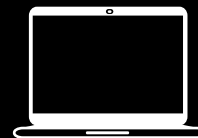
## VOYAGER I BUSINESS BACKPACK (LPN650)

Business backpack Voyager I, made of top quality materials: 1680D polyester and dobby polyester. It has large single compartment with a laptop pocket. Includes key fob, multiple pockets for organization and padded top handle for a comfortable carry option.

Measurements: 460x340x190 mm

Materials: polyester 1680D, dobby polyester

Packing: foil



LAPTOP 15"





# laptop backpacks



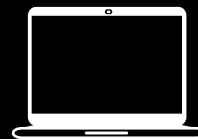
## VOYAGER II LAPTOP & DOCUMENT BACKPACK (LPN600)

Business backpack Voyager II, made of the 1680D polyester for strength and abrasion resistance. Includes a rigid laptop pocket and space for document, air channel system on the back, lumbar support, gunmetal zipper pulls and solid top carry handle.

Measurements: 420x330x200 mm

Materials: nylon, polyester, jacquard, poliester 1680D

Packing: foil



LAPTOP 15"



# cosmetic bags

## TRAVEL COSMETIC BAG VOYAGER (FT650)

Cosmetic bag Voyager is made of 1680D polyester, a material that provides durability and abrasion resistance. The cosmetic bag has one compartment with numerous pockets and a hook that allows you to hang it to have it at hand. At the back of the toiletry bag there is a pocket for small cosmetic items or medicines.

Capacity: 3,5 l

Measurements: 24 x 16,5 x 9 cm

Materials: polyester 1680D

Packing: foil



METAL HOOK





# laptop bags



## VOYAGER LAPTOP BAG 15" (LLN601)

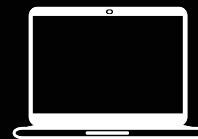
The Voyager laptop bag has one compartment with a padded laptop pouch and additional space for A4 documents. The bag has an external front pocket for accessories. It has soft handles, swivel metal hooks and a padded belt strap.

Capacity: 13,5 l

Measurements: 43 x 32 x 11 cm

Materials: polyester 1680D, dobby polyester

Packing: foil



LAPTOP 15"



# thermal bottles

## NORDIC THERMAL BOTTLE, 500ml. (HBN01)

The Nordic thermal bottle has a vacuum insulated double wall that protects the temperature of the drink. Cold drinks maintain their temperature for up to 24 hours, warm drinks for up to 12 hours and hot drinks for up to 6 hours. Made of 18/8 stainless steel, which not only ensures durability, but also protects the product against aromas and flavors.

Measurements: 7,2 x 22 cm

Materials: stainless steel, plastic

Packing: elegant carton box

■ grey ■ black





# thermal mugs



## **NORDIC THERMAL MUG, 700 ml. (HDN01)**

The Nordic thermal mug has a vacuum insulated double wall that protects the temperature of the drink. Cold drinks maintain their temperature for up to 24 hours, warm drinks for up to 12 hours and hot drinks for up to 6 hours. Made of 18/8 stainless steel, which not only ensures durability, but also protects the product against aromas and flavors.

Measurements: 7,5 x 24,7 cm

Materials: stainless steel, plastic

Packing: elegant carton box

■ grey ■ black



# food jars



## **NORDIC VACUUM FOOD THERMOS, 600 ml. (HFN01)**

The vacuum food thermos will keep your meal at the right temperature for hours. Easy opening and convenient consumption of a meal. Made of extremely durable 18/8 stainless steel, naturally free from BPA and phthalates, resistant to mechanical damage. The food thermos does not affect the taste and smell of food. It has a double insulation, thanks to which it maintains the desired temperature of food for 6 hours.

Measurements: 9,1 x 18 cm

Materials: stainless steel, plastic

Packing: elegant carton box

■ grey ■ black



MAINTAINING  
THE  
TEMPERATURE  
UP TO 24H



DOUBLE  
VACUUM  
WALL



# thermoses

## NORDIC STEEL VACUUM THERMOS, 1000ml. (HTN01)

Vacuum Thermos made of extremely durable 18/8 stainless steel, naturally BPA free. Two steel walls, vacuum-insulated, maintain the temperature of both cold and warm liquids for a long time. The thermos cap also acts as a mug, its double walls do not heat up, ensuring comfort of use. Just unscrew the cap slightly and tilt the thermos to fill the cup.

Measurements: 9 x 30,5 cm

Materials: stainless steel, plastic

Packing: elegant carton box

■ grey ■ black





sets



**SET NORDIC: VACUUM FOOD THERMOS, 600 ml. & STEEL  
VACUUM THERMOS, 1000ml. (HFN01/HTN01)**

Vacuum Thermos and vacuum food thermos made of extremely durable 18/8 stainless steel, naturally BPA free and phthalates, resistant to mechanical damage. Two steel walls, vacuum-insulated, maintain the temperature for a long time. Thermoses doesn't affect the taste and smell of food and drinks.

■ grey ■ black



sets

**SET: NORDIC STEEL VACUUM THERMOS, 1000ml. &  
MULTITOOL OPTIMA (HTN01/MM06)**

Vacuum Thermos made of extremely durable 18/8 stainless steel, naturally BPA free. Practical multitool has a professional anchor expansion system, instead of the defective spring system common on the market. The base is equipped with universal pliers. It also includes the Safe function - it prevents the tools from closing, protects against injuries.

■ grey ■ black



A black umbrella is open, its handle curving downwards. In the foreground, a grey thermal mug with a silver lid and handle sits on a white, tiered pedestal. The background is a dark, textured wall.

sets

**SET: NORDIC THERMAL MUG, 650 ml. & FULL AUTOMATIC UMBRELLA CAMBRIDGE (HDN01/US20)**

The Nordic thermal mug has a vacuum insulated double wall that protects the temperature of the drink. Made of 18/8 stainless steel, which not only ensures durability, but also protects the product against aromas and flavors. A very robust umbrella from the Cambridge collection with DAS (Double Automatic System - automatic closing and opening) and an anti-wind system.

 grey  black



# umbrellas



## **BUSINESS UMBRELLA OXFORD (UP10)**

An automatic umbrella Oxford made of best quality materials. It's classy design makes it an timeless long lasting gift.

Measurements: 102 cm.

Materials: metal, rubber ABS, polyester

Packing: foil, protective pouch

■ grey

■ black



# umbrellas



## **BUSINESS UMBRELLA LONDON (UP50)**

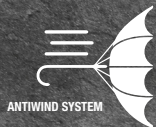
An automatic umbrella London with 8 panels, a steel frame and a rubberized handle. The combination of classical color and a modern shape. Packed in a protective cover.

Measurements: 87 cm

Materials: metal, rubber ABS, polyester

Packing: foil, protective pouch





# umbrellas

## BUSINESS UMBRELLA XENON (UP60)

A classic, strong umbrella with a long and durable frame. The umbrella has a DAS mechanism (automatic opening and closing mechanism using a button), and an anti-wind system (thanks to a durable glass fiber frame, the canopy bends rather than breaking during strong winds). Equipped with an elegant, comfortable handle.

Measurements: 102 cm

Materials: metal, polyester, plastic, fiberglass

Packing: foil, protective pouch



**DAS**  
SYSTEM

AUTOMATIC  
CLOSING AND  
OPENING



# metal tools



## **OPTIMA MULTITOOL (MM06)**

Professional and practical multitool. It has a professional anchor expansion system, instead of the defective spring system common on the market. The base is equipped with universal pliers. It also contains a wood saw, a knife, a cross screwdriver and a flat screwdriver, a bottle and can opener, a nail file. It also includes the Safe function - it prevents the tools from closing, protects against injuries.

Measurements: 10,7 x 3,6 x 2,3 cm

Materials: stainless steel, aluminum

Packing: protective pouch

MADE WITH  
**100%**  
STAINLESS  
**STEEL**





# metal tools



## **OPTIMA MINI MULTITOOL (MM07)**

Professional and practical multitool. It has a professional anchor expansion system, instead of the defective spring system common on the market. The base is equipped with universal pliers. It also contains a knife, a cross screwdriver and a flat screwdriver, a bottle and can opener and carabiner. It also includes the Safe function - it prevents the tools from closing, protects against injuries.

Measurements: 7,8 x 3,3 x 2,1 cm  
Materials: stainless steel, aluminum  
Packing: protective pouch

MADE WITH  
**100%**  
STAINLESS  
STEEL



# metal tools



## **OPTIMA MULTI-FUNCTION TOOL with carabiner (MM08)**

Professional and practical multitool. The base is equipped with a carabiner with lock. It also contains knife, a cross screwdriver and a flat screwdriver, a bottle opener and glass breaker. It additionally includes the Safe function - it prevents the tools from closing, protects against injuries.

Measurements: 11,6 x 5,7 x 1,4 cm  
Materials: stainless steel, aluminum  
Packing: protective pouch

MADE WITH  
**100%**  
STAINLESS  
STEEL



