

YELLOW

BUSINESS GIFTS

Colorissimo®

NORDIC VACUUM FOOD THERMOS 600 ml HFN01

The vacuum food thermos will keep your meal at the right temperature for hours. Easy opening and convenient consumption of a meal. Made of extremely durable 18/8 stainless steel, naturally free from BPA, resistant to mechanical damage. The food thermos does not affect the taste and smell of food. It has a double insulation, thanks to which it maintains the desired temperature of food for many hours. Maintains high temperature up to 6 hours. Keeps low temperature up to 24 hours.

**304
18/8**

Stainless
Steel



Vacuum



Leakproof



Double Wall



24h cold



6h hot

NEW





NORDIC COFFEE MUG

350 ml

HCM01

Nordic thermal mug with excellent thermal insulation capabilities (up to 6 h. high, up to 24 h. low). Fits comfortably in the hand through the use of matt powder coating and ergonomic design. Double wall made of top quality 18/8 food grade stainless steel, powder coated for a safe hold. The mug is 100% BPA-free certified, leak-proof lid, and silicone base. Fits into car coffee dispensers.

304
18/8
Stainless
Steel



Vacuum



Leakproof



Double Wall



24h cold



6h hot

NEW



DRINKWARE COLLECTION

By drinking water from a BPA-free water bottle you are eliminating a main source contributing to higher BPA levels in your body. For improved health and to decrease the risks of the health effects above, we recommend choosing BPA-free drinking bottles from Colorissimo.

- Made of stainless steel
- Soft touch rubber-feel finishing
- Double walled insulation
- Certified for contact with food
- BPA FREE
- Elegant packaging





soft touch drinkware

1. Water bottle, 600 ml / HB01
2. Water bottle, 700 ml / HB02
3. Thermos, 500 ml / HT01
4. Thermal mug, 450 ml / HD02
5. Thermal mug, 450 ml / HD01





**DRINKWARE SET:
WATER BOTTLE 600 ml
& THERMOS 500 ml**

HT01/HB01

Colorissimo drinking set, covered
with soft touch rubber.
Packed in great black box.



PROMOTION!



touch drinkware

PROMOTION!



**DRINKWARE SET:
THERMAL MUG 450 ml
& WATER BOTTLE 700 ml**

HB02/HD02

Colorissimo drinking set, covered with soft touch rubber.
Packed in great black box.



WALL CLOCK SAINT-TROPEZ WS04

A wall clock with a black anodized aluminum frame and a glass cover shield. The tips are black and white, clearly visible and the logo will be extremely clear. The clock is equipped with a silent quartz movement mechanism, which provides durability and precise time.



ANODIZED ALUMINIUM



SILENT MODE



1x AA BATTERY
INCLUDED





420 J2

Very high
resistance
to corrosion

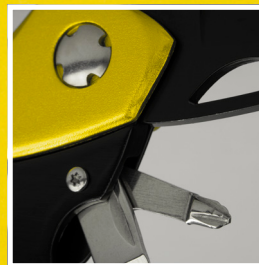


Glass Breaker

OPTIMA FOLDING KNIFE with carabiner MM08

Optima lightweight folding knife with carabiner, ideal for any kind of trip. Main features: sharp stainless steel knife, flat and scalloped wrench tip, shackle-type handle, glass punch, bottle opener. Folding, can be clipped to trousers or backpack. Blade made of high-quality black anodised stainless steel. Colour anodised metal body, finished with a large carabiner. Knife packed in a protective polyester pouch.

NEW



420 J2

Very high
resistance
to corrosion

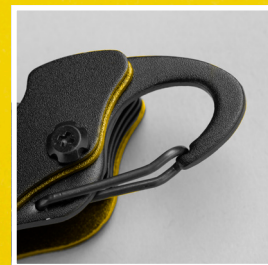
POCKET KNIFE OPTIMA with carabiner MA03

Optima pocket knife with 12 functions, ideal for climbing and hiking. Main features: scissors, knife, wood saw, bottle and can opener, fish scraper. In addition, it has: corkscrew, punch (for puncturing e.g. a can of juice), threader (for patching inner tubes, sewing sail rafts, patching a tyre), nail file, philips screwdriver. Made from high quality black anodised stainless steel, with coloured inserts on the handle.

NEW



durable tools



420 J2

Very high
resistance
to corrosion



Glass Breaker

3in1

knife
glass breaker
belt cutter

EMERGENCY KNIFE OPTIMA with window breaker and belt cutter MK03

Durable, folding emergency knife with a head made of anodised stainless steel. The profiled handle ends in a robust window breaker and car belt cutter. Features a liner lock safety device to prevent accidental closing during use. Blade made of 3Cr13 stainless steel, aluminium handle with coloured inserts. Ideal for paramedics, drivers, extreme sports practitioners.



NEW

420 J2

Very high
resistance
to corrosion



Glass Breaker

LARGE MULTITOOl OPTIMA MM06

Multitool Optima, with tongs, ideal for camping, hiking, everyday DIY. Main features: flat pliers, multi-purpose pliers, wire cutter, wire stripper, wire stripper, 420J2 stainless steel smooth knife blade, wood saw, can opener, cap opener, wood and metal file, phillips screwdriver. Made from high quality black anodised stainless steel, with coloured inserts on the handle.

durable tools



NEW

420 J2

Very high
resistance
to corrosion



Glass Breaker

**OPTIMA TOOLS SET:
FOLDING KNIFE with
carabiner & POCKET KNIFE
MM08/MA03**

Optima lightweight folding knife with carabiner and pocket knife with 12 functions, made from 420 J2 stainless steel with very high resistance to corrosion. Packed in elegant white box.



NEW

420 J2

Very high
resistance
to corrosion



Glass Breaker

3in1

knife
glass breaker
belt cutter

**durable
tools sets**



**OPTIMA TOOLS SET:
LARGE MULTITOO
& EMERGENCY KNIFE
MM06/MK03**

Optima multitool and emergency knife with window
breaker and belt cutter. Made from 420 J2 stainless
steel with very high resistance to corrosion.
Packed in elegant white box.



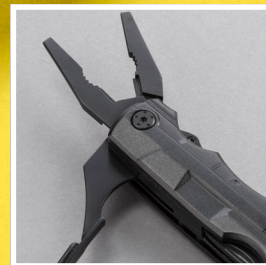
NEW



FOLDING KNIFE COLORADO

MM01-BL

Folding knife Colorado made of stainless steel. Smooth, polished edge. Oxidation protection against corrosion. The knife includes a toolbox, can and bottle opener and a set of screwdrivers. Packed in a pouch made of polyester. Set is packed in elegant white box.



SET: LED TORCH COLORADO & MULTIFUNCTIONAL TOOL DENVER

MT01//MH02

An 8-function tool made of stainless steel. It has, among other things, a hammer, which is rarely found in multifunctional tools, and a nail puller. Led Flashlight Colorado made from high quality aluminum. Generates a focused light beam and zoom up to 5 meters. Generates an alarm light (strobe). 3 x AAA batteries included. Set is packed in elegant white box.





**TRAVELLER SET:
THERMAL MUG NORDIC 350 ml
& FULL AUTOMATIC UMBRELLA
HCM01/US20**

A practical set for people on the go. Full automatic folding umbrella and thermal mug with excellent insulation properties.
Available in many colors. Packed in great white gift box.

**practical
gifts sets**



**DRIVER SET:
THERMAL MUG NORDIC 350 ml
& EMERGENCY KNIFE**
HCM01/MK03

A practical set for car drivers. A thermal mug with excellent insulating properties and a rescue tool with the function of a car seat belt cutter and a window breaker. Available in many colors. Packed in great white gift box.

outdoor backpack



SPORT BACKPACK FLASH S LPN550

Sport backpack Flash S has a headphone output, breathable back, reflective elements, side mesh pockets and 1 main pocket with an internal organiser, as well as 1 small zipped pocket on the front of the backpack.

Measurements: 260x130x380 mm

Materials: nylon, jacquard 420D, nylon

Ripstop, polyester 600D

Packing: foil



OUTDOOR BACKPACK FLASH M LPN525

Measurements: 450x160x310 mm
 Materials: nylon, jacquard 420D, nylon
 Ripstop, polyester 600D
 Packing: foil



OUTDOOR BACKPACK FLASH L LPN501

Measurements: 480x140x310 mm
 Materials: nylon, jacquard 420D, nylon
 Ripstop, polyester 600D
 Packing: foil

Very functional traveller's backpacks made of high-reinforced and padded back with air channel system, reflective elements, rain polyester cover.





sport bags



SPORT'S BAG FLASH LSN501

Original sports bag made of modern materials resistant to mechanical damage, and at the same time extremely light. It has one roomy main compartment and reinforced grips for carrying in hand and an adjustable shoulder grip.

Dimensions: 560x290x290 mm

Materials: nylon Jacquard 420D PU, nylon ripstop PU, polyester 600D



DURABLE MATERIAL

travel accessories



TOILETRY BAG FLASH FT560

Toiletry bag Flash which has a large chamber with compartments for toiletries and a handheld metal hook.

Lightweight and compact – perfect for business trips, summer vacations and for the gym.

Measurements: 310x210x110 mm

Material: nylon Jacquard 420D PU, nylon ripstop PU, polyester 600D

Packaging: foil



HIP BAG FLASH LNN501

Hip Bag from the Flash collection made of tear-resistant, very durable material. It has a capacious pocket closed with a zipper. Equipped with an adjustable strap, headphone output and air flow system on the back.

Dimensions: 300x130x100 mm

Materials: nylon Jacquard 420D PU, nylon ripstop PU, polyester 600D

Packaging: foil

softshells



The Softshell jacket provides extra
The Colorissimo Softshell jacket provides
extra warmth and weather protection when
keeping active in harsh conditions outdoors.
These lightweight jackets have reliable YKK
zippers, and are made of breathable and
resistant to wind materials.

WOMEN'S SOFTSHELL JACKETS DJ2 **MEN'S SOFTSHELL JACKETS DJ1**

Measurements (DJ2): S, M, L, XL, XXL

Measurements (DJ1): S, M, L, XL, XXL, XXXL

Materials: 94% polyester, 6% elastane, 100% polyester fleece

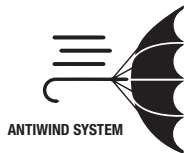
Packing: foil

square umbrella



SAINT TROPEZ UMBRELLA UP30

An automatic two-color umbrella Saint-Tropez with 8 panels, a steel frame and a rubberized handle. The combination of two classical colors and a modern shape. Packed in a protective cover. Measurements: 870 mm Materials: Poliester pongee Packing: protective pouch



professional umbrella



Automatic closing and opening



DAS system:
1. press the button to open



DAS system:
2. press the button to close



ANTI WIND system

FULL AUTOMATIC UMBRELLA CAMBRIDGE US20

A very robust umbrella from the Cambridge collection with DAS (Double Automatic System) and an antiwind system. The frame is made from metal and the handle is covered with ABS plastic for a safe grip and a nice feeling. It is ideal for women's handbags.

The carrying case is included.
Packed in a protective cover.
Measurements: 990 mm
Materials: poliester pongee
Packing: protective pouch

PROMOTION!

practical gifts sets



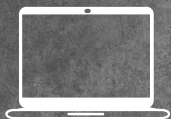
**CAR SET: THERMAL MUG
450 ml & FULL AUTOMATIC
UMBRELLA**

HD02/US20

Dimensions: 31,4 x 16,3 x 8,8 cm

Materials: poliester pongee, ABS, plastic, stainless steel

Packing: elegant carton box



LAPTOP 17"

3

YEARS GUARANTEE

laptop backpacks

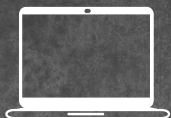




VOYAGER II LAPTOP & DOCUMENT BACKPACK LPN600

Business backpack Voyager II, made of the 1680D polyester for strength and abrasion resistance. Includes a rigid laptop pocket and space for document, air channel system on the back, lumbar support, gunmetal zipper pulls and solid top carry handle. Measurements: 420x330x200 mm
Materials: nylon, polyester, jacquard, poliester 1680D
Packing: foil





LAPTOP 15"



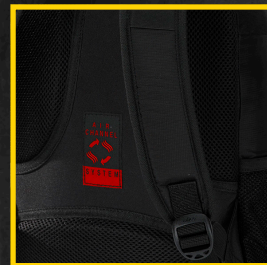
YEARS GUARANTEE

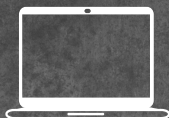


laptop backpacks

VOYAGER I BUSINESS BACKPACK LPN650

Business backpack Voyager I, made of top quality materials: 1680D polyester and doobby polyester. It has large single compartment with a laptop pocket. Includes key fob, multiple pockets for organization and padded top handle for a comfortable carry option.
Measurements: 460x340x190 mm
Materials: polyester 1680D, doobby polyester
Packing: foil





LAPTOP 15"

3

YEARS GUARANTEE

NEW



laptop backpacks

BACKPACK CITY 15" LPN630

Light and roomy, it features one main compartment, equipped with a pocket for a 15" laptop, pockets for small business accessories and 2 side pockets. Additional reinforced back, reinforced braces, gun metal metal zippers and colourful stitching.

Anodised metal plate perfect for labelling.

Measurements: 460x340x190 mm

Materials: polyester 1680D, dobby polyester

Packing: foil





LAPTOP 15"



laptop bags

VOYAGER LAPTOP BAG 15" LLN601

The Voyager laptop bag has one compartment with a padded laptop pouch and additional space for A4 documents. The bag has an external front pocket for accessories. It has soft handles, swivel metal hooks and a padded belt strap.

Capacity: 13,5 l

Measurements: 43 x 32 x 11 cm

Materials: poliester 1680D, doobby polyester

Packing: foil





hanging hook



cosmetic bags

TRAVEL COSMETIC BAG VOYGAER FT650

Cosmetic bag Voyager is made of 1680D polyester, a material that provides durability and abrasion resistance. The cosmetic bag has one compartment with numerous pockets and a hook that allows you to hang it to have it at hand. At the back of the toiletry bag there is a pocket for small cosmetic items or medicines.

Capacity: 3,5 l

Measurements: 24 x 16,5 x 9 cm

Materials: polyester 1680D

Packing: foil



